

F

D

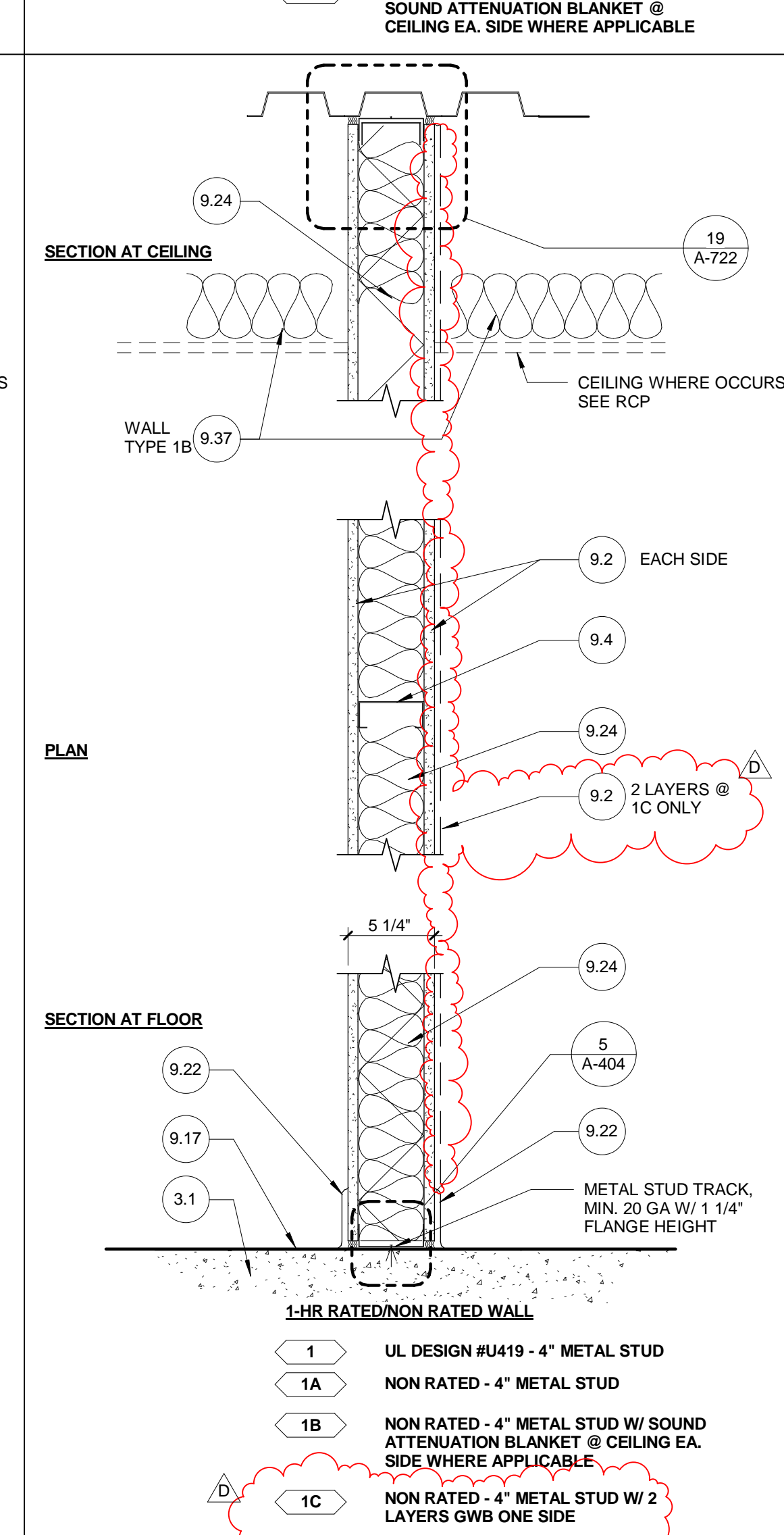
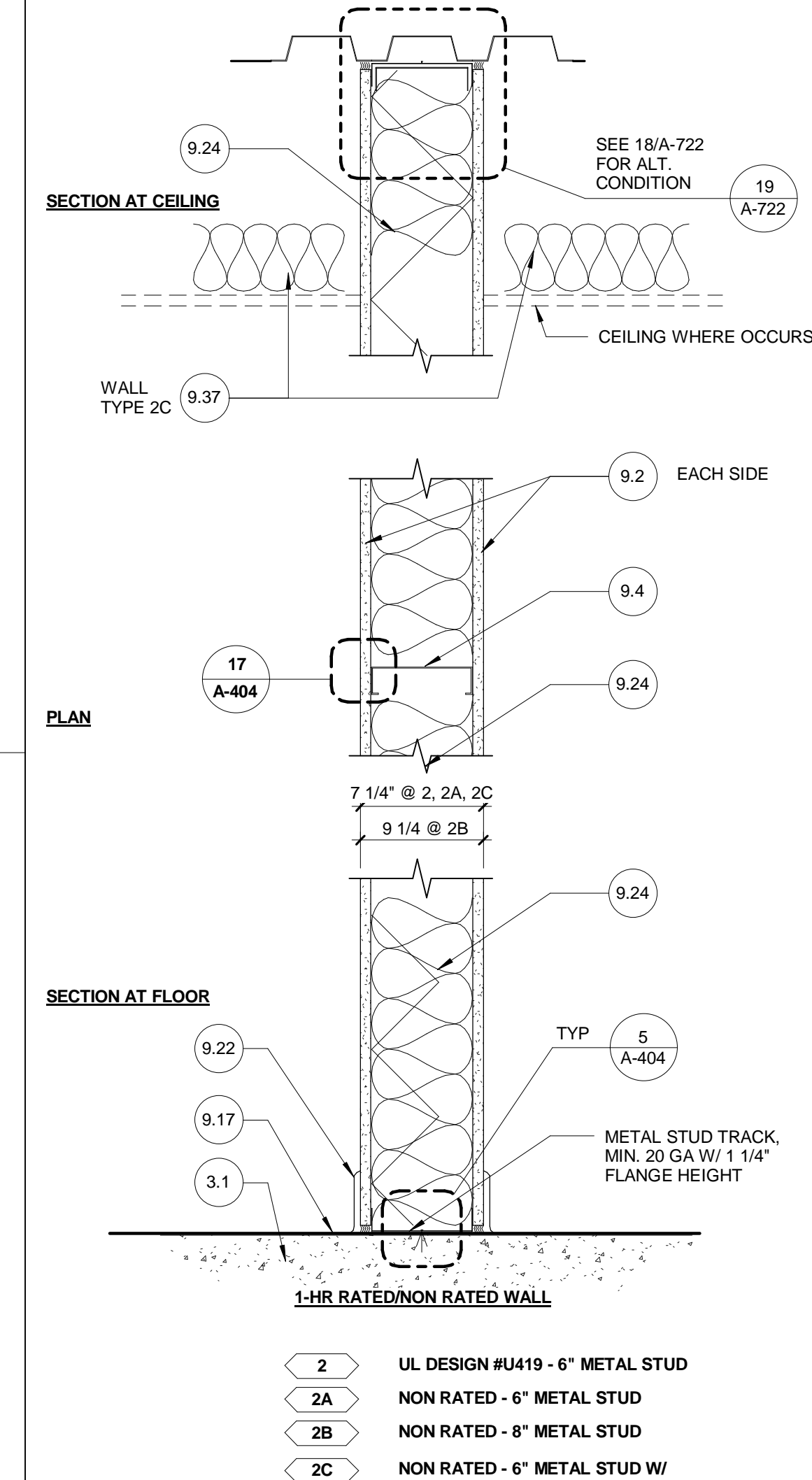
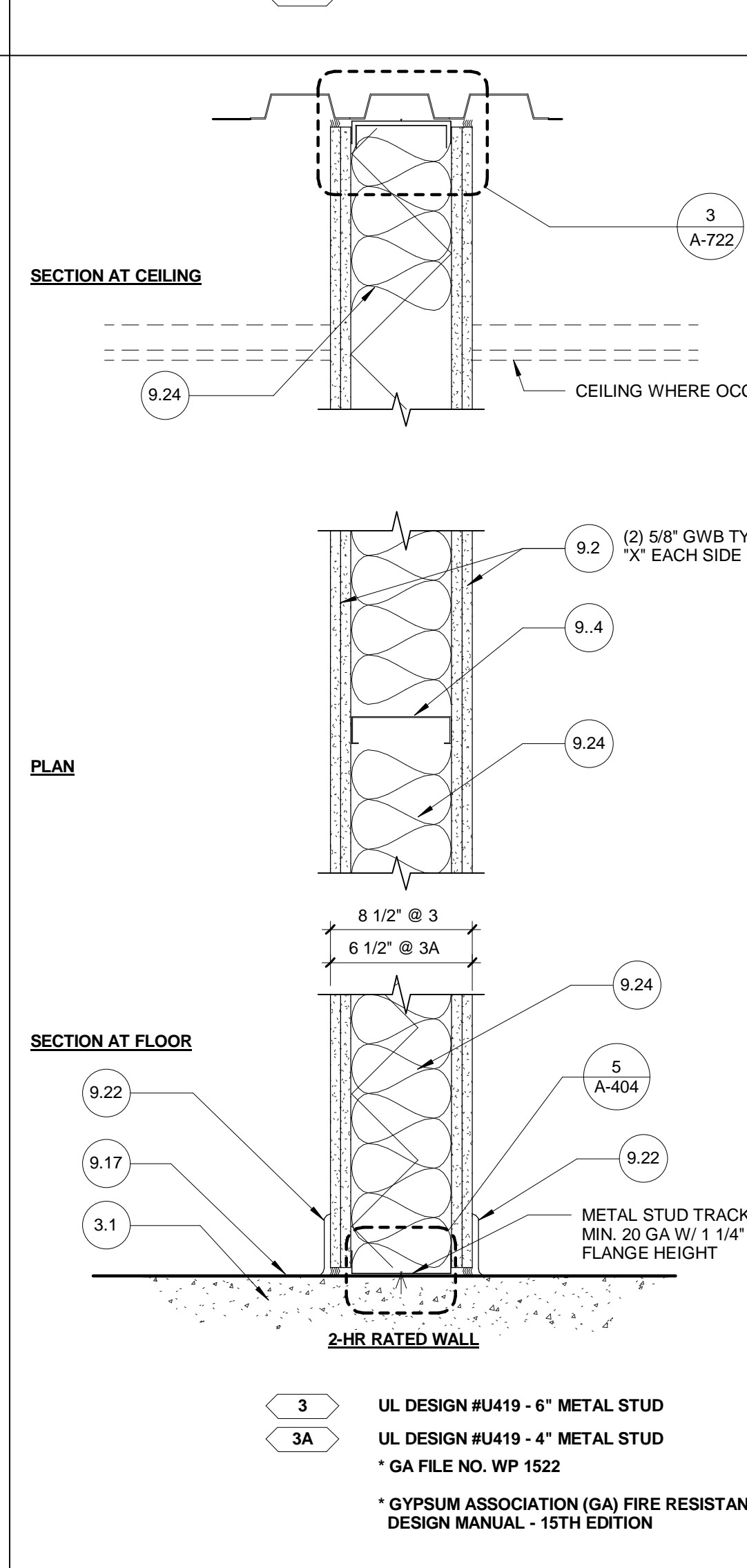
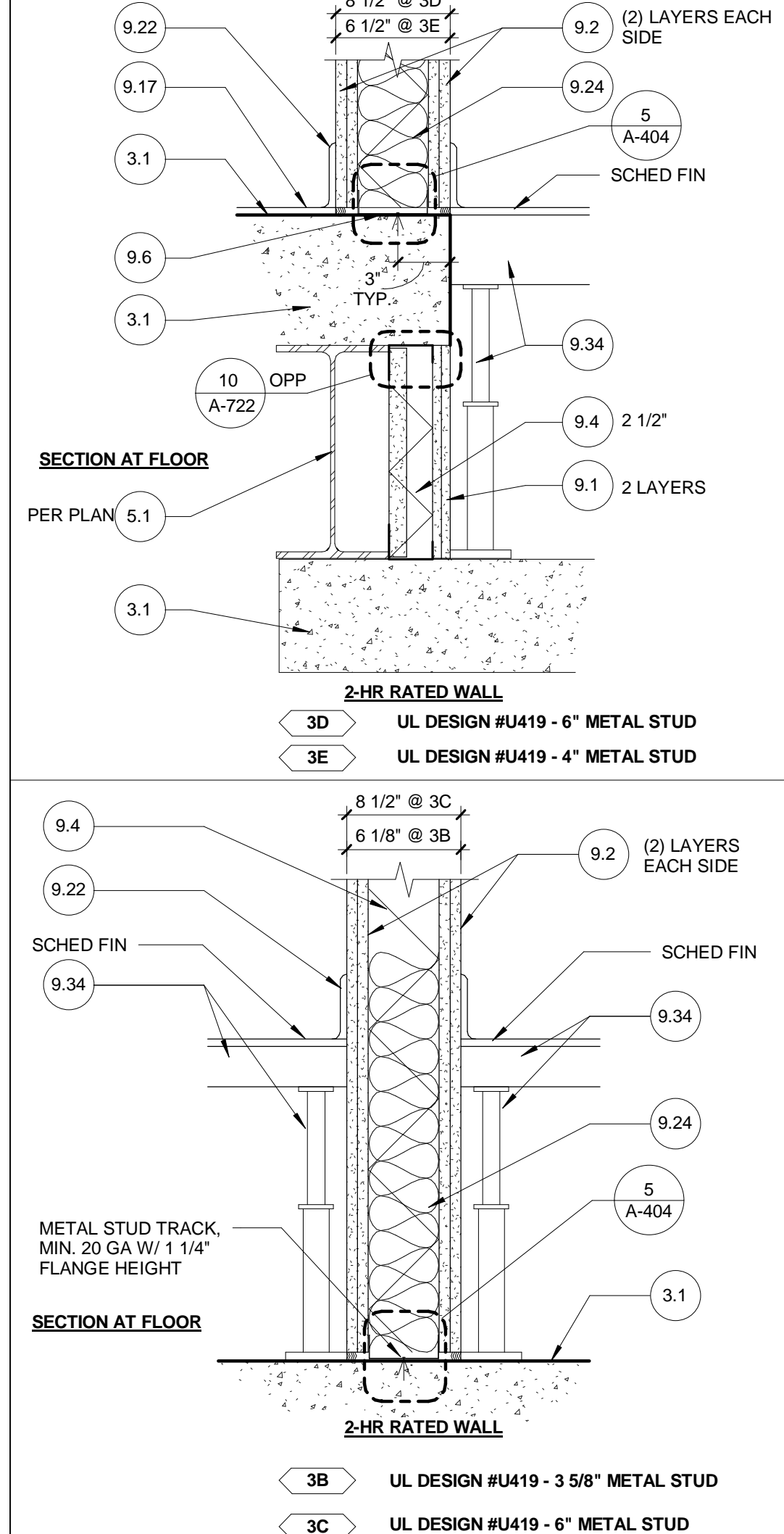
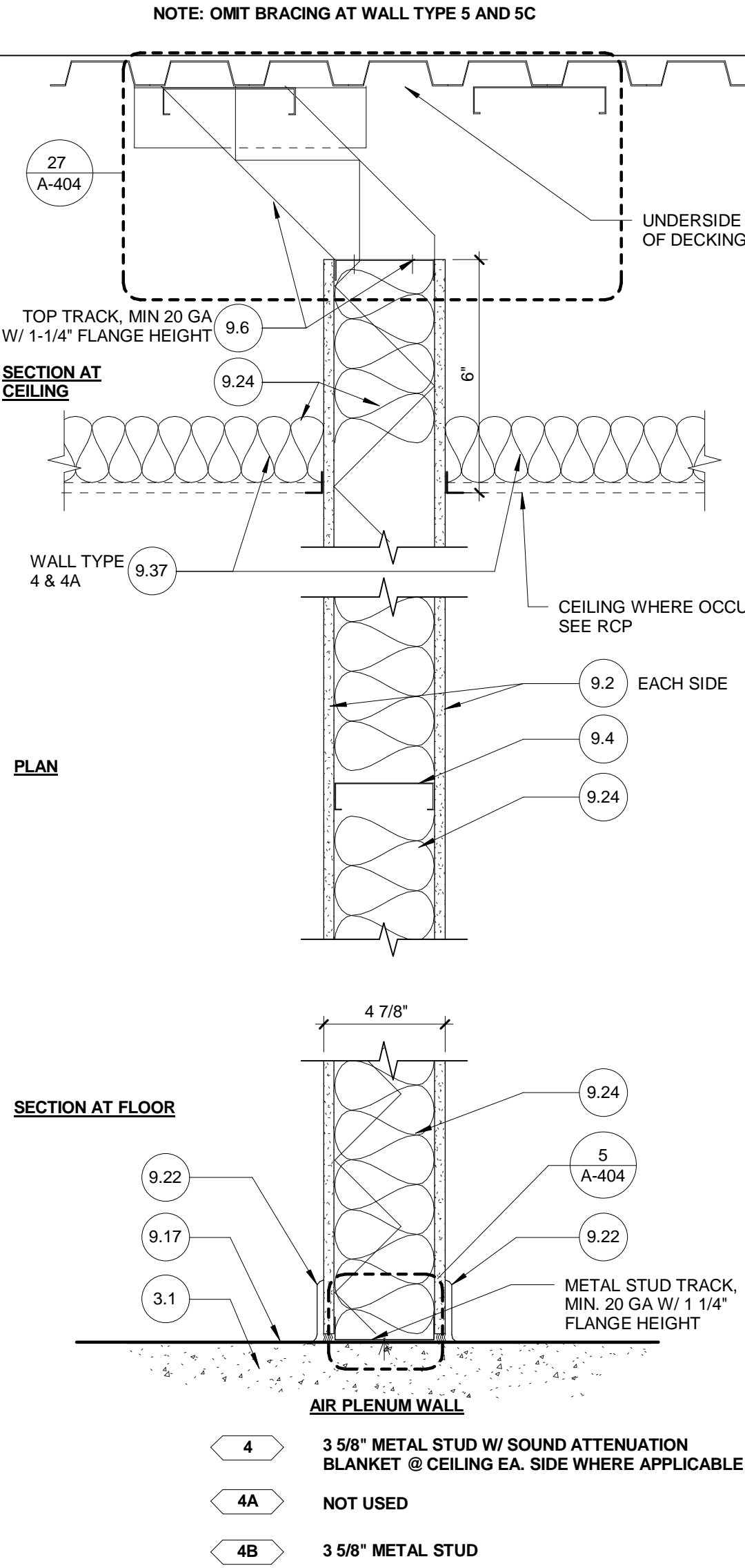
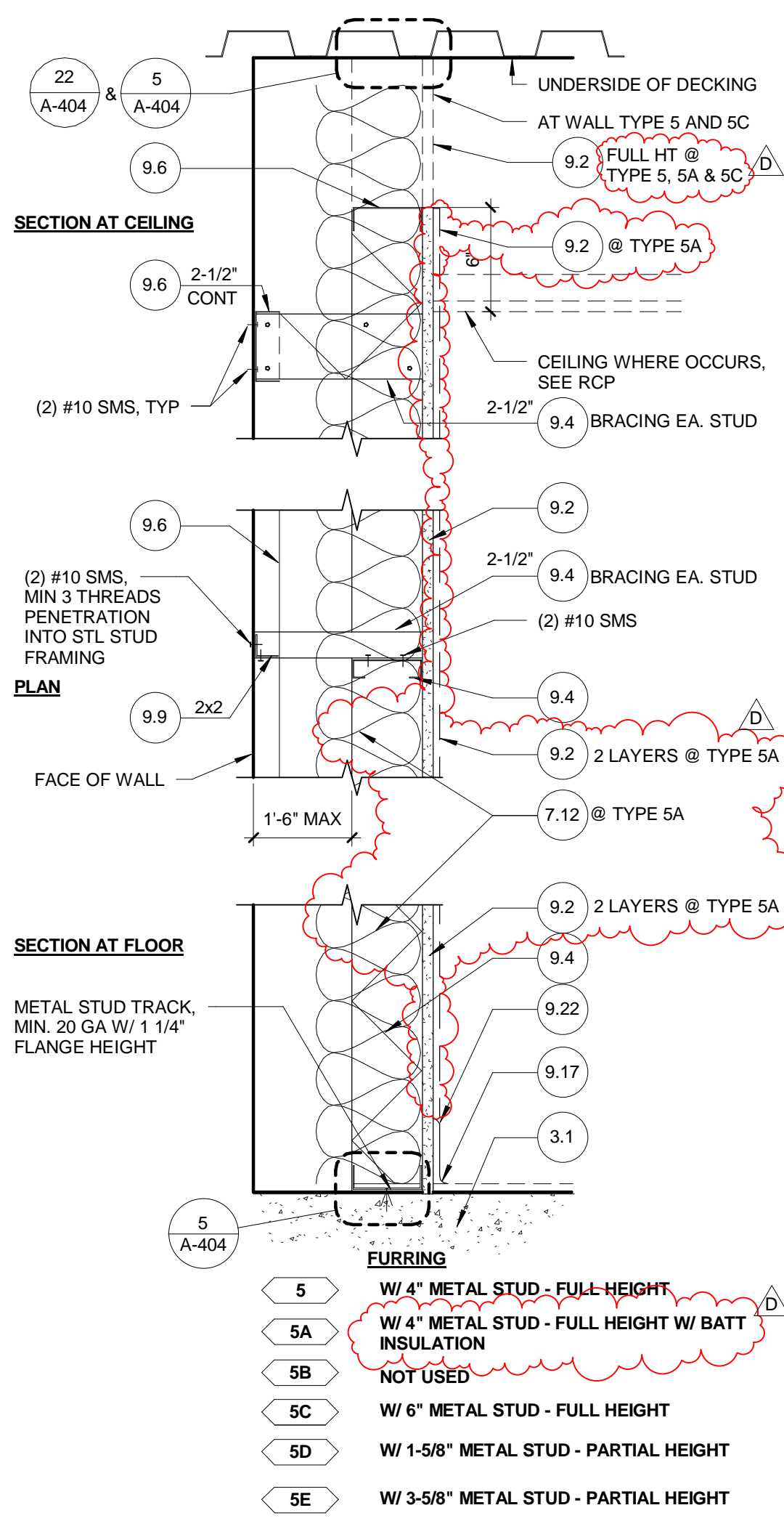
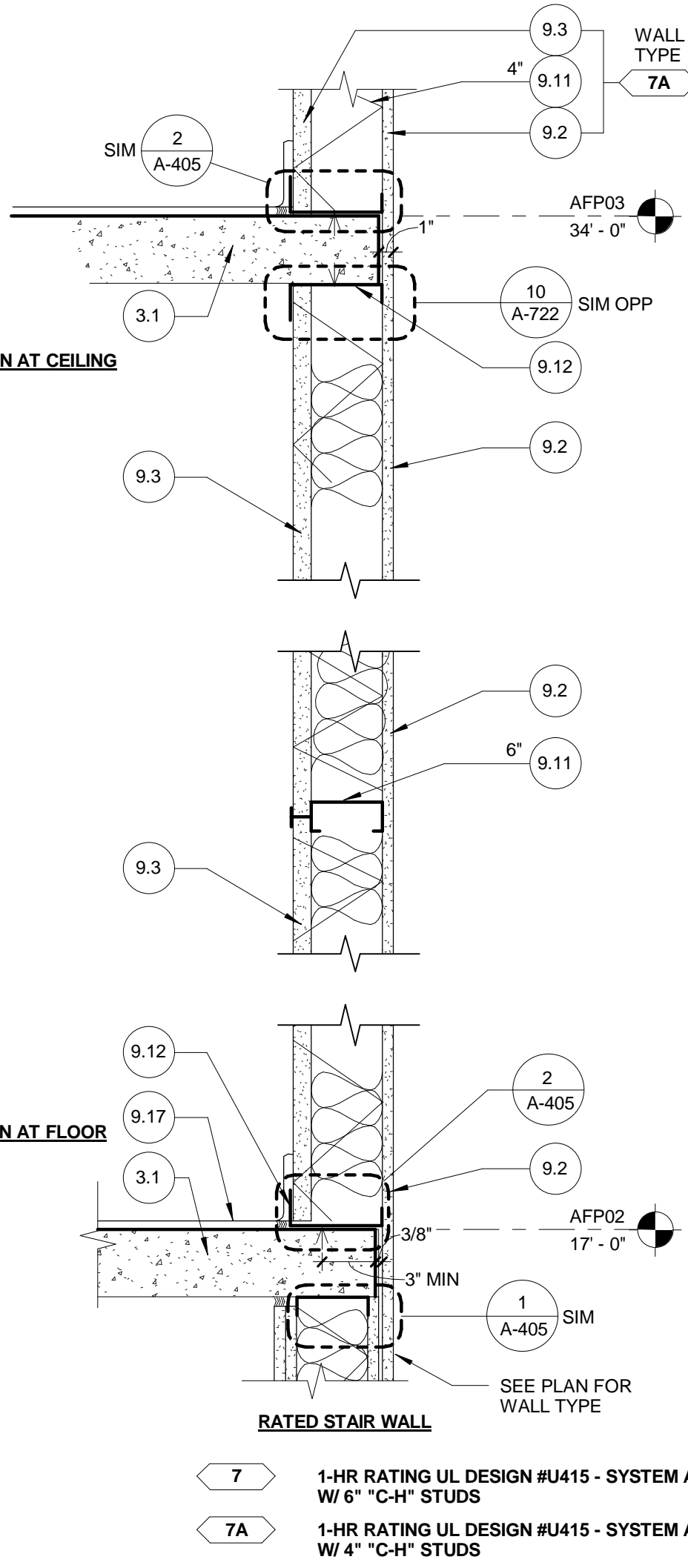
PLAN

C

B

PLAN

A



NOTE:
ALL WALL SHEATHING SHALL BE ATTACHED
W/ #6 SCREWS MIN. @ 12" O/C MAX.

MATERIAL KEYNOTES

DIVISION 03 CONCRETE		DIVISION 09 FINISHES (CONTINUED)	
3.1	CAST IN PLACE CONCRETE	9.15	REINFORCED MORTAR SETTING BED
3.2	10 MILL VAPOR RETARDANT	9.16	WATERPROOFING MEMBRANE
3.3	6" CONCRETE HOUSEKEEPING PAD	9.17	SCHEDULED FLOORING
3.4	GRADE BEAM	9.18	SUSPENDED ACOUSTICAL PANEL
3.5	CONCRETE STOP	9.19	SUSPENDED ACOUSTICAL LINEAR PLANK
DIVISION 04 MASONRY		CLG SYSTEM (ACT-1)	
4.1	(NOT USED) D	9.20	SUSPENDED GYP BOARD SOFFIT SYSTEM
4.2	CMU SPLIT FACE	9.21	1" ACOUSTICAL BLACK FACED INSULATION BLANKET
DIVISION 05 METALS		9.22	SCHEDULED WALL BASE
5.1	STEEL BEAM	9.23	PAINT
5.2	STEEL COLUMN	9.24	ACOUS INSULATION 3-INCH (UON)
5.3	EXPOSED STEEL COLUMN	9.25	TYPE "S" SCREWS @ 12" O/C (UON)
5.4	EXPOSED STEEL BRACE	9.26	WIRE HANGER 12 GA MIN (UON), SEE SHEET A-740
5.5	METAL DECK	9.27	16 GA FRAMING CLIP
5.6	STEEL CHANNEL	9.28	METAL Z-CLIP
5.7	STEEL ANGLE (SST-WHERE NOTED)	9.29	5/8" CEMENTITIOUS TILE BACKER BOARD
5.8	STEEL PLATE-GALV (SST-WHERE NOTED)	9.30	REVEAL
5.9	STEEL PIPE (SST-WHERE NOTED)	9.31	EXTRUDED ALUMINUM "J" MOLDING
5.10	TUBULAR STEEL	9.32	"FRY REGLET" NO. 2054 OR EQUAL
5.11	STEEL BRACING	9.33	GYPSUM BOARD CONTROL JOINT
5.12	STEEL BENT PLATE (SST WHERE NOTED)	9.34	3-COAT CEMENT PLASTER SYSTEM (062400)
5.13	STEEL LADDER GALVANIZED	9.35	ACCESS FLOORING (09900)
5.14	METAL GRATINGS GALVANIZED	9.36	FURRING CHANNEL MIN. 20 GA. SIZE AS NOTED
5.15	METAL ROOF DECK CEILING SYSTEM (EPICORE 3.5)	9.37	5/8" GLASS MAT FACED TILE BACKER BOARD
5.16	ANCHOR BOLT W/ EXPANSION SHIELD	9.38	SOUND ATTENUATION BLANKET
5.17	OPEN WEB JOIST	9.39	TERRAZZO STAIR TREADS
5.18	EXPANSION JOINT COVER		ACOUSTICAL WALL PANELS (098413)
5.19	EXT. COLD FORMED METAL FRAMING, SEE STRUCT.	DIVISION 10 SPECIALTIES	
5.20	SAFETY & TIE BACK ANCHOR	10.1	MARKER BOARD, SIZE AS NOTED
5.21	BASIS OF DESIGN MODEL: # PB75-S BY PRO-BEL	10.2	TACK BOARD
DIVISION 06 WOOD, PLASTIC AND COMPOSITES		10.3	TOILET PARTITION
6.1A	WD BLOCK/NAILER PRESSURE TREATED	10.4	NOT USED
6.1B	WOOD BLOCKING/NAILER FR TREATED	10.5	FIXED SUNSCREENS (107113)
6.2	PLYWOOD 3/4" FR TREATED	10.6	BUILDING DIRECTORY
6.3	PLASTIC LAMINATE	10.7	METAL LOCKER
6.4	WOOD CABINETS	10.8	FIRE EXTINGUISHER CABINET (FEC)
6.5	MEDIUM DENSITY FIBERBOARD	10.9	FIRE EXTINGUISHER (FE)
6.6	SOLID SURFACING-MATERIAL COUNTERTOP	10.10	METAL STORAGE SHELVING
6.7	5/8" GLASS-MAT FACED GYP SHEATHING (061600)	10.11	NOT USED
6.8	1/2" ORIENTED STRAND BOARD (OSB)	10.12	CORNER GUARD
	ROOF SHEATHING (061600)	10.13	CRASH GUARD
		10.14	NOT USED
DIVISION 07 THERMAL & MOISTURE PROTECTION		10.15	DOOR STOP (FLOOR MOUNTED)
7.1	CONCRETE ROOF TILES	DIVISION 11 EQUIPMENT	
7.2	STAINLESS STEEL FLASHING / COUNTERFLASHING	11.1	REFRIGERATOR
7.3	NOT USED	11.2	RANGE/STOVE TOP
7.4	POLYVINYL-CHLORIDE (PVC) ROOFING (075419)	11.3	MICROWAVE OVEN
7.5	MEMBRANE EDGE FASTENER @ 12" OC	11.4	DISHWASHER
7.6	SAND COATED ROOF WALKWAY (075419)	11.5	VENDING MACHINE (N.I.C.)
7.7	RIGID ROOF INSULATION OF AGED R=30	11.6	MOTORIZED PROJECTION SCREEN
	OR 5 1/2" MIN. (UON) (075419)	11.7	VIDEO WALL SYSTEM (GFEI)
7.8	RIGID ROOF INSUL TAPERED R=30 or 5.5" MIN (075419)	11.8	PROJECTOR (N.I.C.)
7.9	NOT USED	11.9	WALL MOUNTED PLASMA TV (N.I.C.)
7.10	FIRE STOPPING SYSTEM	11.10	CONTROL UNIT
7.11	1/2" GLASS MAT FACED PROTECTION BOARD	11.11	POWER UNIT
7.12	BATT INSULATION R=19 (UON)	11.12	CONDUIT
7.13	INSECT SCREEN	11.13	PAPER TOWEL HOLDER
7.14	PVC MEMBRANE FLASHING	DIVISION 12 FURNISHINGS	
7.15	PVC WRAPAROUND PIPE SEAL	12.1	MANUAL SUNSHADE (122413)
7.16	5/8" GLASS MAT FACED THERMAL BARRIER	12.2	MOTORIZED BLACKOUT SHADE (122413)
7.17	CRICKET	12.3	MANUAL SUN/BLACKOUT SHADE COMBO (122413)
7.18	EXTRUDED ALUMINUM TRIM	12.4	MOTORIZED SUN/BLACKOUT SHADE COMBO (122413)
7.19	ALUMINUM FLASHING	12.5	SYSTEM FURNITURE (GFEI)
7.20	FORMED SHEET S.S. COPING	12.6	CONTROL CONSOLES (GFEI)
7.21	NOT USED / D	12.7	ENTRANCE FLOOR GRILLE (124816)
7.22	DRAINAGE GEOMEMBRANE (071416)	12.8	HORIZONTAL LOUVER BLINDS (122113)
7.23	BELOW GRADE WATERPROOFING (071416)	DIVISION 14 EQUIPMENT	
7.24	SST CLAMPING RING	14.1	HYDRAULIC ELEVATORS (142400)
7.25	PREFABRICATED ROOF CURB-INSULATED	DIVISION 22 PLUMBING	
7.26	SEALANT WITH BACKER ROD	22.1	ROOF DRAIN
7.27	SEALANT FR & AGST WHERE NOTED	22.2	OVERFLOW DRAIN
7.28	NEOPRENE WASHER OR PAD	22.3	VENT THRU ROOF
7.29	#30 FELT	22.4	ELECTRIC WATER COOLER
7.30	FIRE TRACK SHADOWLINE	22.5	KITCHEN SINK
7.31	FIRE SAFING INSULATION	22.6	SERVICE SINK
7.32	EPDM GASKET	22.7	WATER CLOSET
7.33	20 GA GALVANIZED SPLASH PAN (076200)	22.8	LAVATORY
7.34	DOWN SPOUT (076200)	22.9	URINAL
7.35	20 GA GALV. GUTTER (076200)	22.10	FLOOR DRAIN
7.36	PERFORATED SHEET ALUMINUM (ALP-1)	22.11	AREA DRAIN
7.37	GALVANIZED METAL FLASHING (076200)	22.12	FLOOR SINK
7.38	THERMOPLASTIC WATERPROOFING SYSTEM (071354)	22.13	SUMP
7.39	NOT USED	22.14	PORTABLE EYE WASH STATION (224500)
7.40	5/8" GLASS-MAT FACED WATER RESISTANT	22.15	WATER HYDRANT
7.41	GYP SUBSTRATE BOARD	22.16	RAIN OUTLET DRAIN PIPING
7.42	INSULATION BOARD R=13	22.17	VACUUM EXHAUST
7.43	SPRAY-ON CEMENTITIOUS FIREPROOFING	22.18	ROOF RECEPTOR
7.44	SEALANT	22.19	FLOOR CLEANOUT
DIVISION 08 OPENINGS		DIVISION 23 HVAC	
8.1	DOOR	23.1	BOILER FLUE
8.2	FRAME PER SCHEDULE TYPE	23.2	LINEAR DIFFUSER
8.3	FRAME ANCHOR	23.3	EXHAUST FAN
8.4	OVERHEAD COILING DOORS	23.4	DUCT
8.5	ACCESS DOOR-WALL	23.5	DIFFUSER
8.6	ACCESS DOOR CEILING	23.6	UNIT HEATER
8.7	SOUND RETARDANT DOOR-STC 55	23.7	INTAKE VENTILATOR
8.8	GROUT FILL	23.8	E/G EXHAUST PIPE
8.9	AUTOMATIC DOOR BOTTOM	23.9	CRAC UNIT
8.10	WEATHER-STRIPPING	23.10	FIRE DAMPER
8.11	THRESHOLD	23.11	RETURN AIR TRANSFER GRILLE
8.12	HM GLASS STOP	DIVISION 26 ELECTRICAL	
8.13	POWER ASSIST DOOR - WALL PLATE	26.1	LIGHT FIXTURE
8.14	ALUM. STOREFRONT GLAZING SYSTEM	26.2	CARD READER
8.15	ALUM. STOREFRONT ENTRANCE DOOR	26.3	CABLE TRAY
8.16	GLAZED ALUMINUM CURTAIN WALL	26.4	EQUIPMENT RACKS
8.17	INTERIOR ALUMINUM FRAMING SYSTEM	26.5	EMERG. ENGINE GENERATOR (GFCI)
8.18	1" INSULATING GLAZING	26.6	CONDUITS
8.19	FRITTED GLAZING	26.7	DUCT BANK
8.20	SPANDREL GLAZING	26.8	RADIO RACKS (GFEI)
8.21	1/4" THICK VISION GLASS (SAFETY WHERE NOTED)	26.9	ANTENNA CONDUIT
8.22	CLERESTORY WINDOW	26.10	LIGHTNING PROTECTION
8.23	SHIM	26.11	PANEL - SEE SCHEDULE
8.24	KNOX BOX	DIVISION 31/32 EXTERIOR IMPROVEMENTS	
8.25	SS WALK-OFF GRILLE	31.1	SAND
8.26	EXTRUDED ALUMINUM LOUVER (UNO)	31.2	CRUSHED STONE
8.27	INSULATED BLANK-OFF PANELS	31.3	COMPACTED SOIL
8.28	EXTRUDED ALUM TRIM TO MATCH ALUM FRAME	31.4	PERIMETER DRAIN
8.29	NOT USED	31.5	ASPHALT PAVING
8.30	SOLAR TUBE- TUBULAR DAYLIGHTING	31.6	CONCRETE PAVING
DIVISION 09 FINISHES		31.7	EXPANSION JOINT
9.1	1/2" GWB TYPE "X"	31.8	COMPRESSIBLE FILLER
9.2	5/8" GWB TYPE "X"	31.9	CONTROL JOINT
9.3	1" GWB SHAFT LINER	31.11	ORNAMENTAL MTL FENCES+GATES
9.4	20 GA MET STUD @ 16" O/C (UON), SEE SHEET A-404	31.12	UNIT PAVERS
9.5	SLOTTED TOP TRACK	DIVISION 32	
9.6	METAL STUD TRACK	32.1	CHAIN-LINK FENCES AND GATES
9.7	COLD FORMED FURRING CHANNEL	32.2	SYNTHETIC RESILIENT SURFACE
9.8	METAL TRIM GALVANIZED		
9.9	FRAMING ANGLE, MIN 20 GA GALV		
9.10	6X10 MIL FLUSH MOUNT BACKING FOR MTL STUDS		
9.11	SHAFT WALL STUDS MIN. 20 GA @ 24" OC (UON)		
9.12	SHAFT J RUNNER		
9.13	TERRAZZO FLOORING		
9.14	CERAMIC TILE		

NOTE: 1. NUMBERS IN PARENTHESIS () INDICATE REFERENCED SPECIFICATION SECTION
2. FOR LIGHT GAGE METAL FRAMING AND ANCHORING DETAILS SEE SHEET A-404

PROJECT



CLIENT



DESIGNER

DMJM H&N | AECOM

899 TOWN & COUNTRY ROAD, ORANGE, CALIFORNIA 92668
T: 714-667-2400 F: 714-667-2725 www.dmjmh.com

CONSULTANT

DSA STAMP

IDENTIFICATION STAMP
DIVISION OF THE STATE ARCHITECT
OFFICE OF REGULATION SERVICE

APPL. #: 04-109200-2

AC _____ FLS _____ SS _____
DATE _____

FILE NUMBER: RESD

STATUS

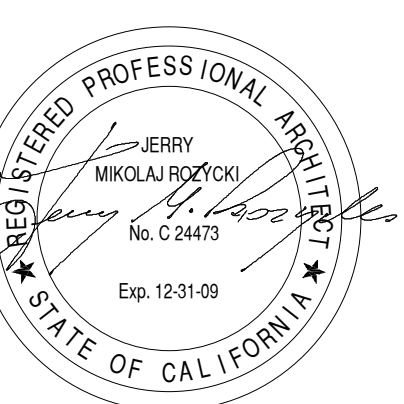
JULY 30, 2008

ISSUE

D	10/31/08	BID PERIOD ADDENDUM #6
MARK	DATE	DESCRIPTION

PROJECT NO: 60004333.4000
DRAWN BY: EB
CHECK BY: JR

SHEET TITLE



WALL TYPES

A-411